

Shown: PSCK-8, IC-51



**Enerpac remote mounted pressure switches monitor the hydraulic system to determine any change of pressure. The signal can then be used to control the pump, or other peripheral devices.**

### IC-series

The IC-series electrical pressure switches provide pressure readings for monitoring and/or control of hydraulic system pressure in workholding systems.

### PB-4 Adaptor

The PB-4 is an adaptor for the PSCK-8 or PSCK-9 pressure switches. The G1/4" male end of the adaptor can be installed in the port of a manifold or valve body.

**Integrated in your hydraulic system, the pressure switch can be used to automate your clamping cycles.**



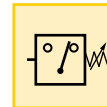
## Reliable electrical control of hydraulic power

- Compact design minimizes space requirements on fixture
- Switch is easily adjustable to meet system requirements.

**Pressure: 20 - 515 bar**

**Accuracy: 2%**

- E** Presostatos
- F** Pressostats
- D** Druckschalter



### Options

#### Fittings

□ 194 ▶



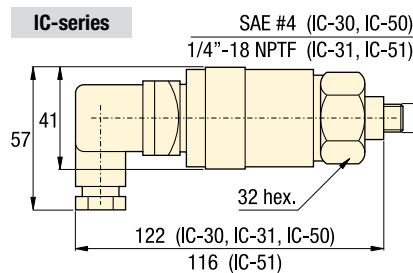
#### Gauges

□ 190 ▶

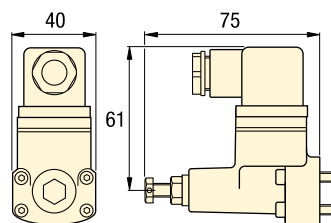


### Important

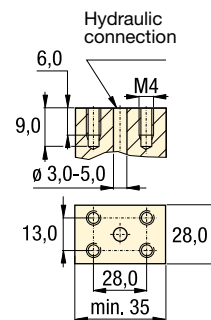
**Do not exceed the maximum pressure.**



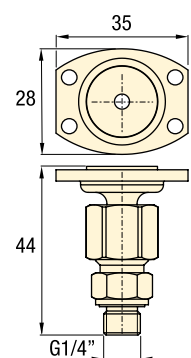
### PSCK-8, 9



### Mounting dimensions



### PB-4



## Product selection

Adjustable pressure range	Electrical specifications	Model number	Deadband	Switch point repeatability	Oil port	
bar	at 50/60 Hz		bar	% of range		kg
<b>▼ Electrical pressure switches</b>						
35 - 240	125 VAC @ 5 A	<b>IC-30</b>	7 - 35	+/-2	SAE #4	0,5
35 - 240	125 VAC @ 5 A	<b>IC-31</b>	7 - 35	+/-2	1/4"-18 NPTF	0,5
205 - 515	125 VAC @ 5 A	<b>IC-50</b>	17 - 55	+/-2	SAE #4	0,5
205 - 515	125 VAC @ 5 A	<b>IC-51</b>	17 - 55	+/-2	1/4"-18 NPTF	0,5
100 - 350	115 VAC @ 2 A	<b>PSCK-8</b>	17 - 55	+/-2	Manifold mount	0,4
20 - 210	115 VAC @ 2 A	<b>PSCK-9</b>	17 - 55	+/-2	Manifold mount	0,4
<b>▼ Mounting adaptor for PSCK-pressure switches</b>						
-	-	<b>PB-4</b>	-	-	G 1/4"	0,1